

2017-2018

	- 1 -
	- 2 -
1.	- 2 -
2.	- 2 -
3.	- 3 -
4.	- 3 -
	- 8 -
1.	- 8 -
2.	- 9 -
3.	- 9 -
4.	- 9 -
	- 11 -
1.	- 11 -
2.	- 12 -
3.	- 12 -
4.	- 12 -
5.	- 13 -
6.	- 14 -
7.	- 14 -
	- 15 -
1.	- 15 -
2.	- 15 -
3.	- 16 -
4.	- 16 -
	- 16 -
1.	- 16 -
2.	- 17 -
3.	- 17 -
4.	- 18 -
5.	- 19 -
6.	- 19 -
7.	- 19 -

	- 20 -
1.	- 20 -
2.	- 20 -
3.	- 20 -
4.	- 20 -
5.	- 22 -
6.	- 23 -
	- 24 -
	- 24 -

		2	"	"		2	"
"		6				8	"
"	11	"	"	3	"	"	24
		43			1		

2017-2018

1 2017-2018

37

5

8

2

2

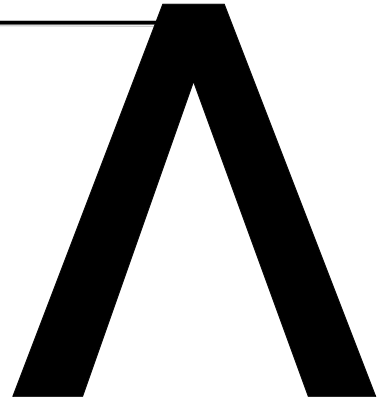
()

b +UvÑ
4

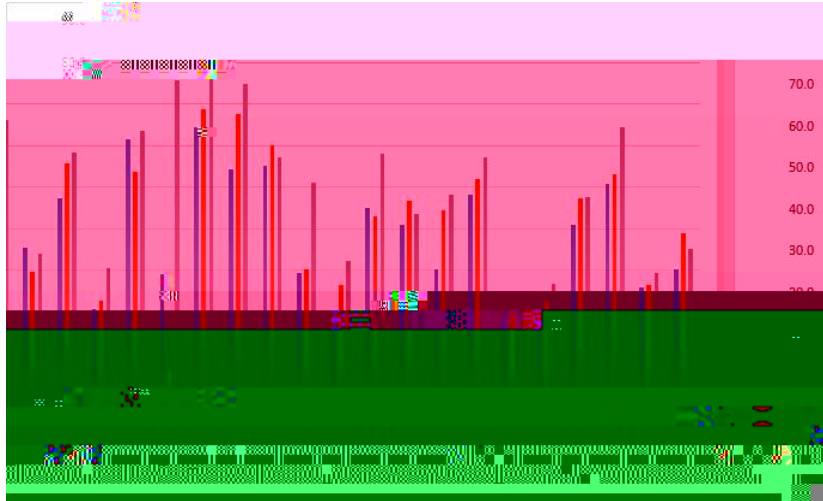
"



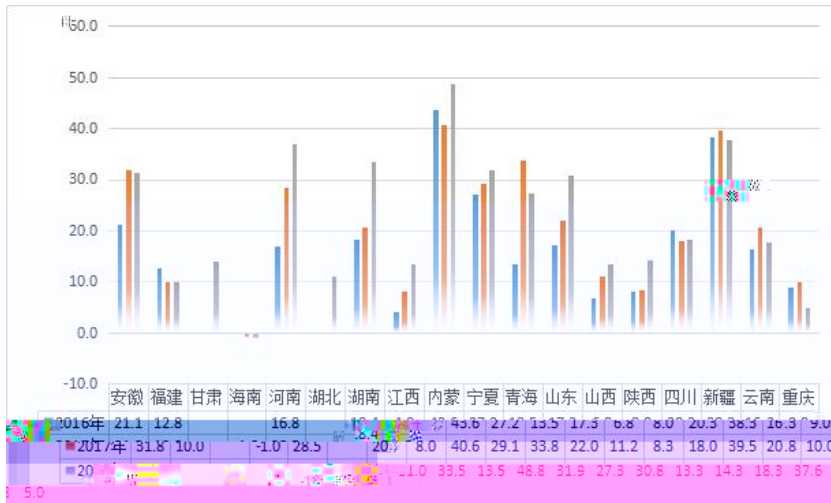
" "



18 12 50 9 2016-2018
 2017 1 2

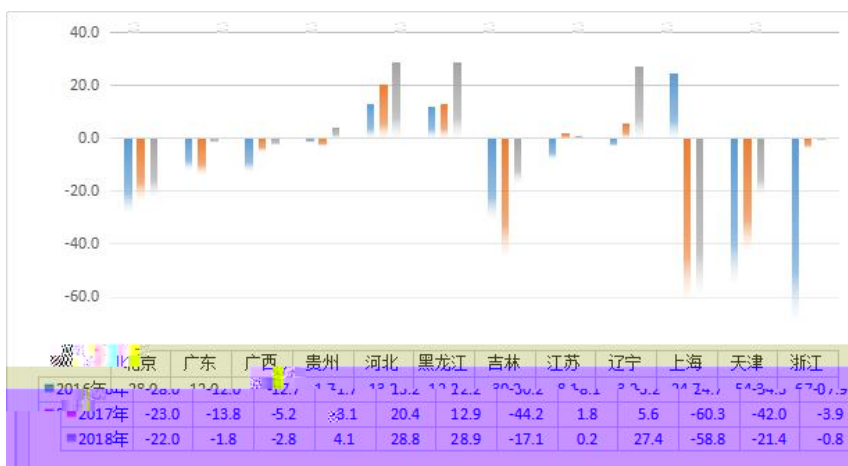


1 2016-2018

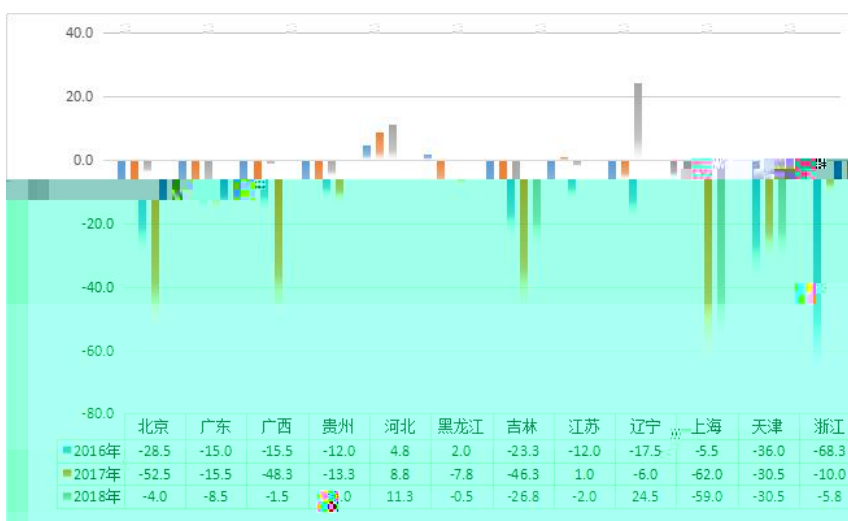


2 2016-2018

12 2017 11
 2016-2018 3 4



3 2016-2018

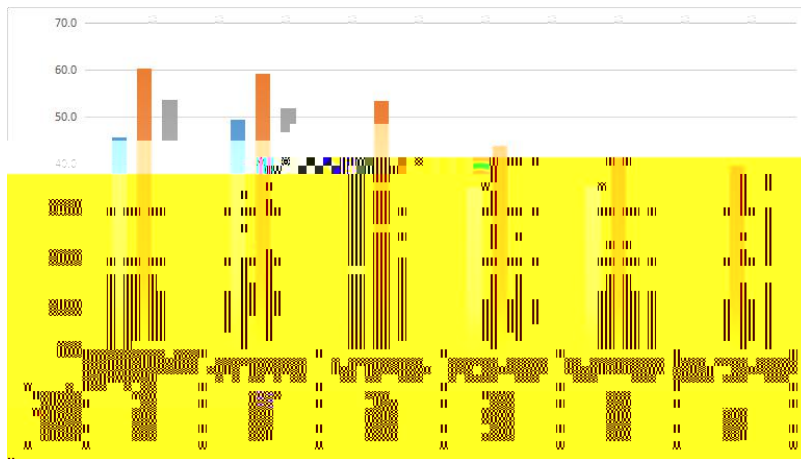


4 2016-2018

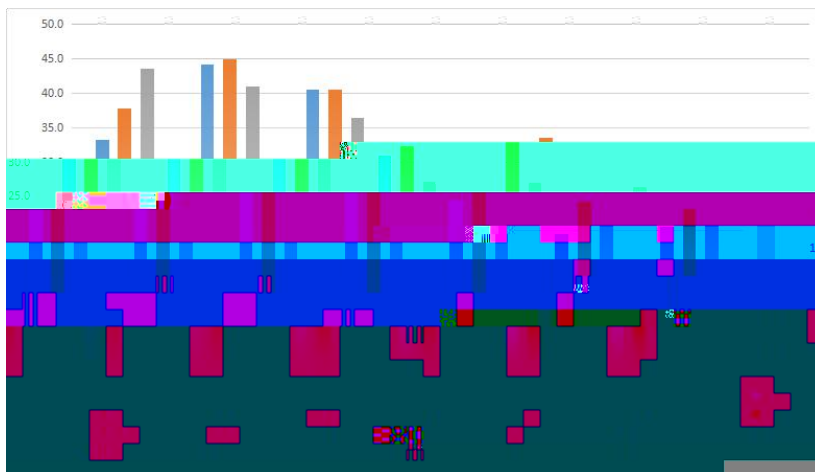
2												
				45					30			764
2017	252	2016		418								
3												
4												
		240		240					98%			99%
236				235								
2												
2018				3186					66.8%			

70%	40	2684	174
154	59	59	16
	493	19	2017
500. 8	26. 8	2017	4. 2

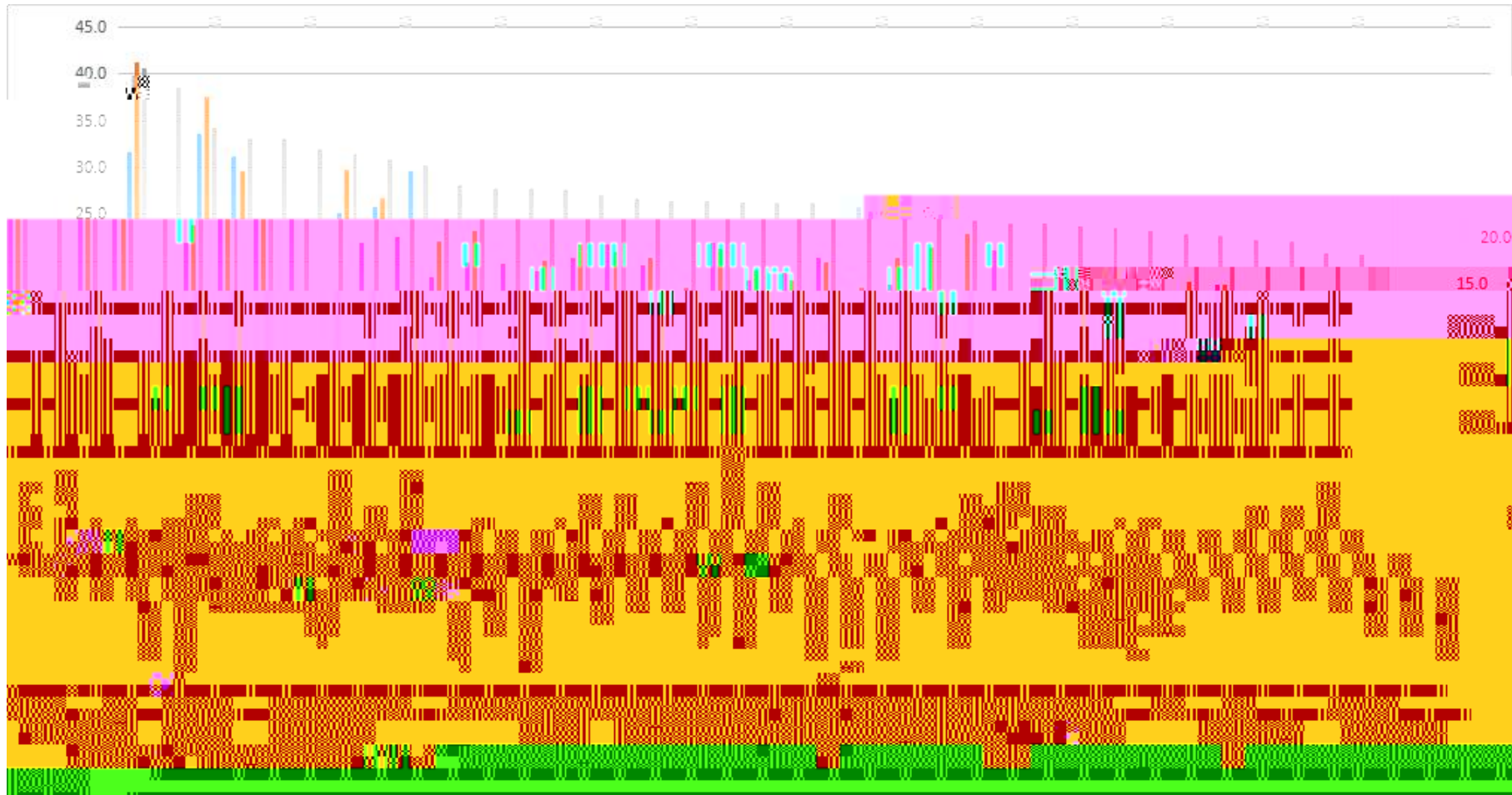
50			
	5	40	
	11		30
	5	6	7
			2016- 2018



5 2016-2018



6 2016-2018



7 2016- 2018

		528	10	2017	6
532.4			5	17.6	7
		3			
3					
%					
		1,288	320		
0.25	"	"	180	13.98%	
	595		46.2%		
	1,164		90.37%		
	3	4	5		
			3		

		%		%
	185	14.36	128	40
	410	31.83	142	44.38
	645	50.08	42	13.12
	6	0.47	1	0.31
	42	3.26	7	2.19
	1,288	100	320	100

		%		%
	713	55.36	85	26.56
	451	35.02	143	44.69
	123	9.55	90	28.12
	1	0.08	2	0.62
	1,288	100	320	100

5

		%		%
35	305	23.68	37	11.56
36-45	641	49.77	87	27.19
46-55	282	21.89	147	45.94
56	60	4.66	49	15.31
	1,288	100	320	100

&"

	22582		19125		2959
315	78	105	16181		26204.6
1288		320	1448		18.10
		794			55.52%
2502			42.98%		
	271			18.95%	614
			10.55%		268
		18.74%	581		
	9.98%				
	644			45.03%	
1,912			32.85%		
597			41.75%	1,624	
	27.9%				
		207			222
	93.24%				

"

2017		8,420		959.05	
	1,155.95		4402.61		501.46
	604.42				

("

1		1,210,704.97		1,210,704.97	
	298,594		952,047		

2017-2018

			+	387,203
	92,386			120,309
30,800		185,222		13,858
9		112,558		
	17.15			5.33
8.2		0.61		4.98
	6			
	6			

		387,203		17.15
		120,309		5.33
		185,222		8.2
		13,858		0.61
		112,558		4.98

2

2017	2	41,566
5,598	1,943,973	90,988
3,394,561	66	

"

"

"

		1494		5070		4710	
1909		304		2497		5070	
1808		40		35.7%		3886	
72		76.7%					
				2		MOCC	
MOCC		MOCC		MOCC			
2018		MOCC		2015		2016	
				18		MOCC	
		158				200	
2017-2018		44				13	
				12			
		1		2		38	
		2018				23	
		10		13			
"				"			

-	-	-	-	"				"
	"		2014				"	" "
"			"				2017	101
	9	2017		65				
" 2017		"						
					"	"		
							2018	
	6	4	15					
		40						
					2017-2018		92	
)"								
		30						
2017-2018								821
		15	226	580				"
+"			631					2

6	7			1	3	
	2018	"	"	MBA		
2018						1
1	2		"	+"		
2018			2018			
		2018				
"		"				
					31	ERP
*"						
						2018 163
4997						
	"	"				
	2018	1099				95. 6%
			2018			
"	"		1	2		
	2018					
2	5	7		6		
+"						
				"	"	2
					"	" 1
				"	"	4

%'

"

"

"

"

&"

"

"

"

"

"

"

"

"

"

23. 2% 28. 17% 25. 41%

4 1 16 1 292

2

("

" "

" " "

" "

" "

" " 7

PDS

" " " "

" "

" " " "

" "

" "

" "

&"

1-2

6

1

130

60

" "

("

1

" "

2017- 2018

80

" "

91. 53 90. 41

2

2017- 2018

461

QUALIFICATION

%



2018
4545

51%

30%

		%
62	53	85. 48
29	28	96. 55
65	60	92. 31
64	58	90. 62
236	222	94. 07
61	59	96. 72
70	69	98. 57
59	55	93. 22
235	223	94. 89
57	53	92. 98
124	122	98. 39
53	49	92. 45
194	185	95. 36
59	55	93. 22
117	109	93. 16
57	55	96. 49
159	151	94. 97
56	54	96. 43
97	93	95. 88
88	85	96. 59
64	58	90. 62
56	56	100
152	144	94. 74
87	83	95. 4
120	116	96. 67
126	122	96. 83
52	49	94. 23
61	58	95. 08
39	37	94. 87
136	130	95. 59
58	54	93. 1
80	78	97. 5
117	112	95. 73

2017-2018

		%
	71	92.21
	56	96.55
	61	98.39
	60	90.91
	91	94.51
	67	80.6
	113	86.92
	46	91.3
	59	88.14
	66	87.88

8				
				%
	36.5	55.4	8.1	0
	35.7	54.6	9.7	0
	39.2	51.4	9.4	0
	33.9	51.7	14.4	0
	38.3	50.4	11.3	0
	39.9	48.6	11.3	0.2
	37.8	49.1	12.6	0.5
	37.5	51.7	10.8	0
	34.6	53.4	11.5	0.5
	34.6	51.3	13.9	0.2
	32.1	49.9	17.8	0.2
	27.7	63.5	8.1	0.7

* "

"

"

14

1993

1983

1980

1979

GPS

1977

1978	1978						
		1981					
			1993				
1978		1987					
						2002	
						2011	
4	28	"	"		"		"

"

"

7

" "

" "

"

" "

"

